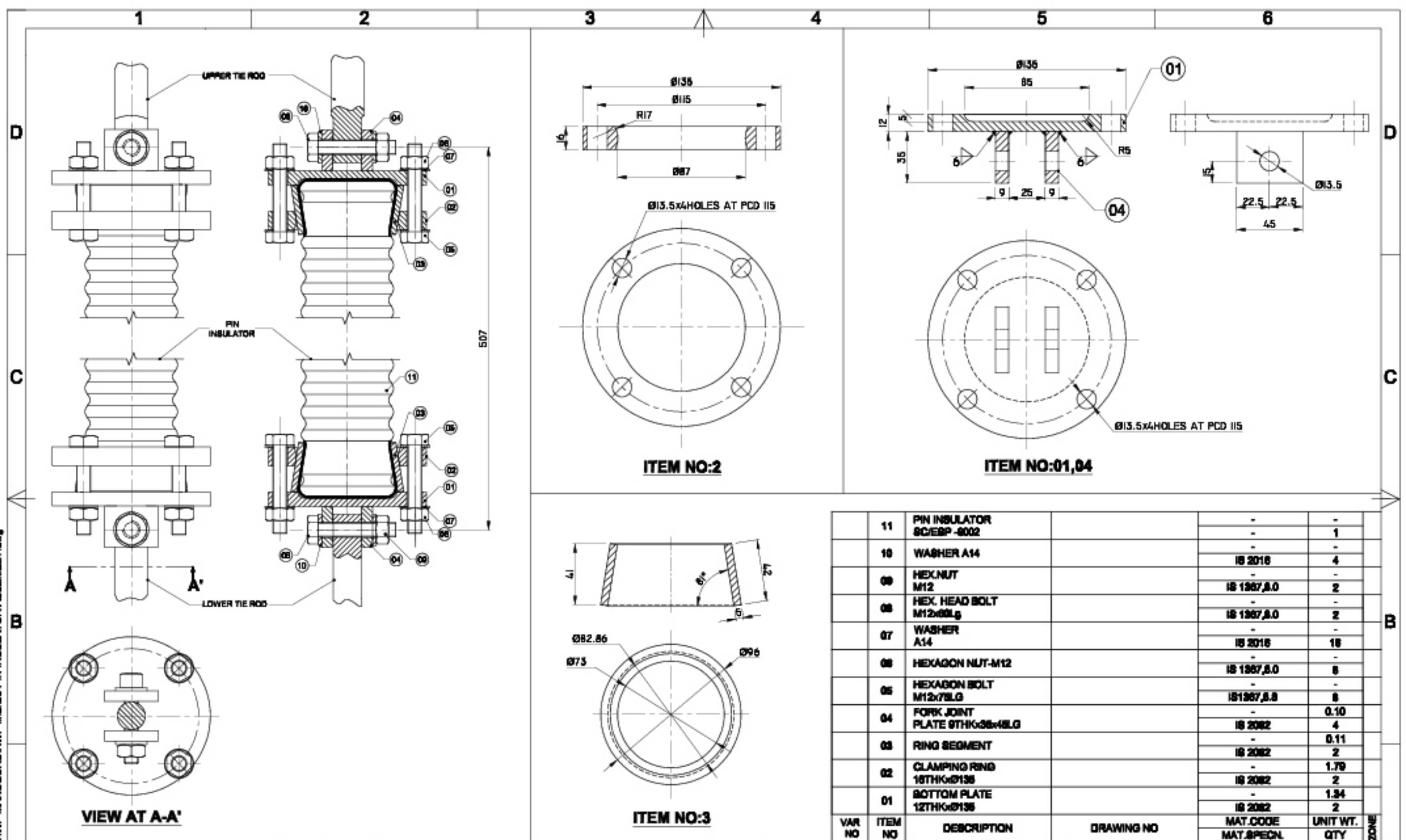


FILE:D:\ESP SPARES\DRAWING\HWP MANUGURU\HWP final\96-PIN INSULATOR ASSEMBLY.dwg



1. PLEASE DONOT SCALE THE DRAWING
2. ALL DIMENSIONS ARE IN MM
3. IF IN DOUBT ASK
4. NUMBERS ARE SHOWN IN TRIANGLE FOR REVISION
5. AVOID SHARP EDGES
6. FOR SYMBOLS REFER UNI-STD-0001

No.	DATE	DETAILS	BY	APPD.
REVISION				
THIS DRAWING AND ALL INFORMATION HERE ON IS THE PROPERTY OF RELIANCE POTTERIES AND REPRODUCTION OR USE IN ANY FORM IS TO BE DONE WITH THE WRITTEN PERMISSION OF RELIANCE POTTERIES				

VAR NO	ITEM NO	DESCRIPTION	DRAWING NO	MAT.CODE	UNIT WT.	QTY
	11	PIN INSULATOR SC/ESP-9002		-	-	-
	10	WASHER A14		IS 2018	4	1
	09	HEX NUT M12		-	-	-
	08	HEX. HEAD BOLT M12x60Lg		IS 1367,8.0	2	2
	07	WASHER A14		IS 2018	18	2
	06	HEXAGON NUT-M12		IS 1367,8.0	8	8
	05	HEXAGON BOLT M12x75Lg		IS 1367,8.8	8	8
	04	FORK JOINT PLATE 9THKx36x48Lg		IS 2082	4	0.10
	03	RING SEGMENT		IS 2082	2	0.11
	02	CLAMPING RING 18THKx136		-	1.79	2
	01	BOTTOM PLATE 12THKx136		IS 2082	2	1.34
		TOTAL WT:				

RELIANCE POTTERIES

PRODUCT: ELECTROSTATIC PRECIPITATOR
CLIENT: _____
TITLE: PIN INSULATOR ASSEMBLY
DRG NO: RP/ESP-9002 **REV NO:** 0

SCALE: DRN: G.N. 28-08-08 CHKD: G.N. 28-08-08 APPD: R.R.K.	SOURCE: NAME: _____ DATE: 28-08-08 JOB NO: _____
--	--

A

A